

Ship Building industry

CONTENTS

Volume 3, Issue 1

SHIP REPORT

- 12 | WELL ENHANCER
Latest in Rigless Well Intervention
- 44 | FLINTERREBECCA
Sound & Silent Dry Cargo Vessel
- 62 | DON AMADO
Cost-Effective Workhorse

MARINE PROPULSION & POWER GENERATION

- 21 | CLEAN SAVINGS
Wärtsilä Integrated Design
- 36 | PRIME MOVERS TWIN CHALLENGES
MAN Diesel Green Mode
- 52 | IMO II IN FOCUS
CAT Coming Clean
- 70 | NEW THRUSTER GENERATION
Voith Revives Radial Propellers

INTERVIEW

- 26 | UNUSUAL YEARS
Hans Smits, Port of Rotterdam Authority CEO

TRADE FAIR

- 30 | EUROPORT ISTANBUL 2009
Eurasian Gateway
- 58 | ON & OFFSHORE 2009
First Edition Main Event

COMPANY PROFILE

- 40 | DREDGING STANDARD
Damen Dredging Equipment

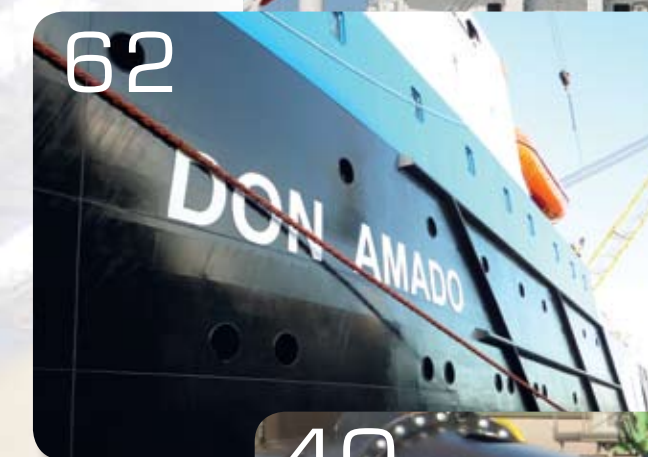
REGULARS

- 1 | OPINION
- 5 | NEWS IN BRIEF
- 75 | OUTFITTERS PAGES
- 78 | YELLOW & FINCH PAGES
- 80 | ADVERTISERS' INDEX

52



62



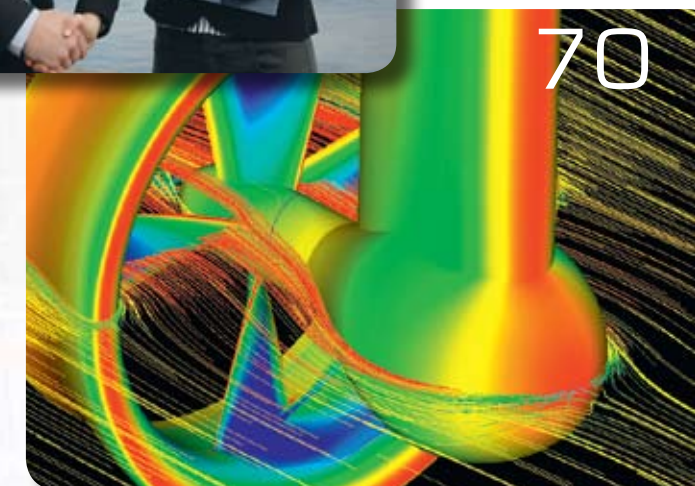
40



58



70



Front cover and left page: Saturday 31 May 2008 saw the festive launching of the well intervention vessel Well Enhancer at the IHC Krimpen Shipyard. This vessel is being built for Helix Energy Solutions Group, USA. Before launching the vessel was named by Mrs. Nikki Morrice, spouse of Mr. Bill Morrice, Vice President of Well Ops, the company that will operate the vessel. The Well Enhancer has been developed by IHC Krimpen Shipyard based on the successful IHC Merwede Type 22 series of vessels. This particular Type 22 has been further enhanced in close cooperation with Helix Energy Solutions Group, Inc. Photo courtesy of Dave Jansen.